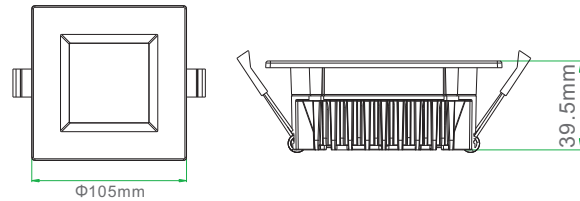


# novalite

Better light for a better life

Novalite 9W LED Downlight **SAMSUNG 5630 LED**  
 PRODUCT CODE: NL-SDL-9W-WW/CW

NOVALITE DL Series offering significant energy savings, high reliability and sustainability LED lighting products. They are high-quality replacements for conventional light sources for both residential and commercial applications.



## QUALITY · GREEN · ENERGY

- 9W power consumption which uses much less electricity over the traditional 50W halogen lamps.
- Step back opal diffuser lens which not only offers a more diffused and wide light but gives you that anti-glare factor due to the step back feature.
- Internal reflector system which controls the light evenly across the lens
- Samsung LED, a world leader in SMD LED technology.
- Available in 90mm hole cut out size.
- The 9W downlight comes in both surface, concave reflector and square formats, matt white and satin chrome finishes, Stylish and modern to suit any home or business.
- Fully Dimmable with branded leading and trailing edge dimmers.
- 3 years Residential Warranty.
- Extremely wide 90 degree beam angle.
- Fully CE,ROHS,SAA ,RCM Approved.
- Waterproof IP40.

## Application



Domestic Lighting



Commercial Lighting



Shop Lighting

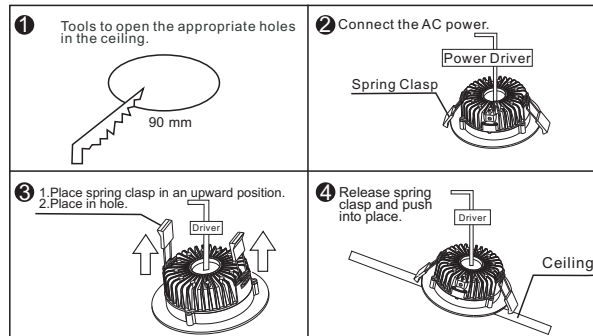
### Note:

Temperature Range: Operating Temperature: -10°C to 45°C. Case Temperature of Lamp: 64°C.  
 Humidity Range: 0 to 95% non-condensing humidity.

## Packaging Information

- 1.Box Size: L115\*W115\*H95mm.
- 2.N.W :0.34KG, G.W : 0.407KG;
- 3.Ctn Size:480\*365\*310mm.1/36pcs
- 4.Total N.W: 12KG, Total G.W: 16KG

## Installation Instruction



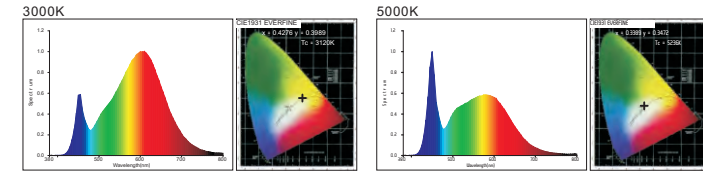
## Product Detail

### Technical Specification:

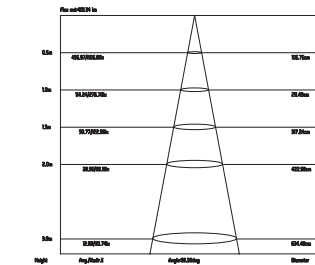
Model	Wattage	CRI	Voltage	Life Time	Beam Angle	CCT	Flux(lm)	Efficacy (lm/w)	Dimmability
NL-SDL-9W	9W	>80	AC220-240V 50Hz	>40,000 hrs	90°	2700K(WW) 6000K(CW)	600lm 650lm	71lm/w 73lm/w	YES

### Optical Parameters:

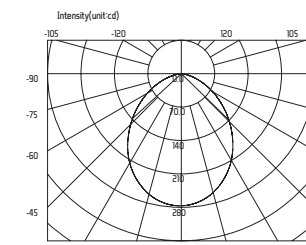
#### Light Source Test:



#### Average Illuminance Figure



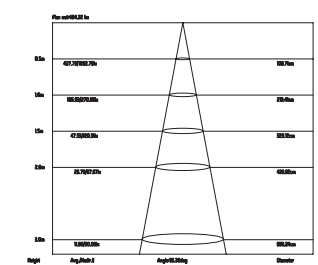
### 2700K



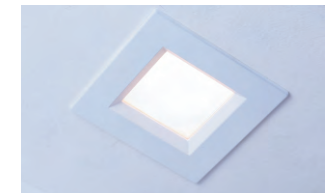
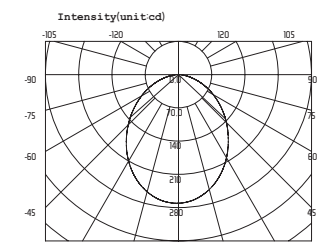
#### Lighting Effect



2700K



### 6000K



6000K